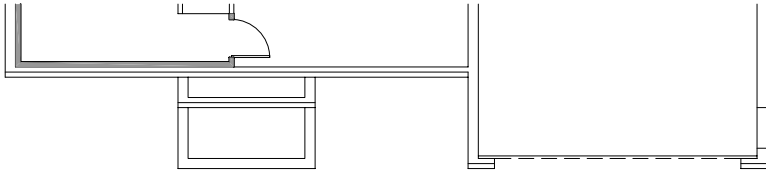


FINISHED BASEMENT PLAN ELEV. #1 & #3



FINISHED BASEMENT PLAN ELEV. #2



FINISHED BASEMENT PLAN ELEV. #4

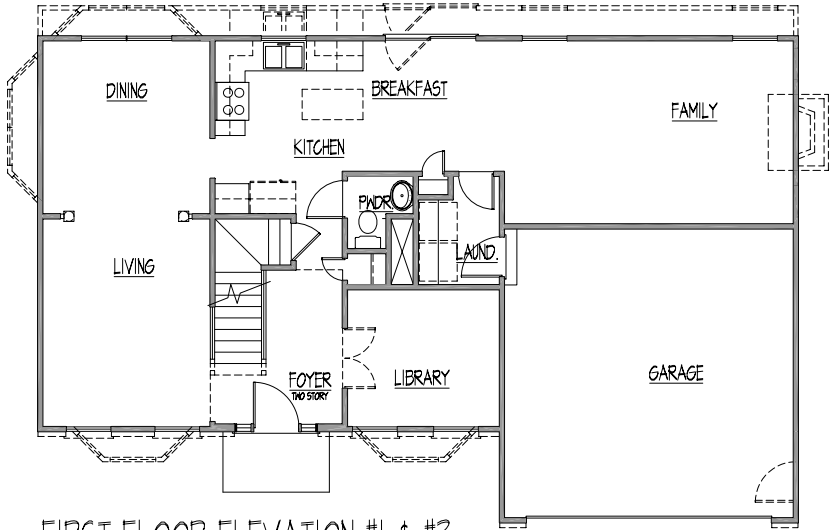
JONATHAN P. BUTTS
 ARCHITECTURAL DESIGNER
 446 GARDNER COURT
 BALTIMORE, MARYLAND 21254
 (410) 544-5878

CONTENTS
 FINISHED BASEMENT PLANS
 SCALE: 1/4" = 1'-0"
 DATE: JUNE 13, 2003
 DRAWN: [unintelligible]
 PROJECT TITLE:
 THE CAMBRIDGE I & II

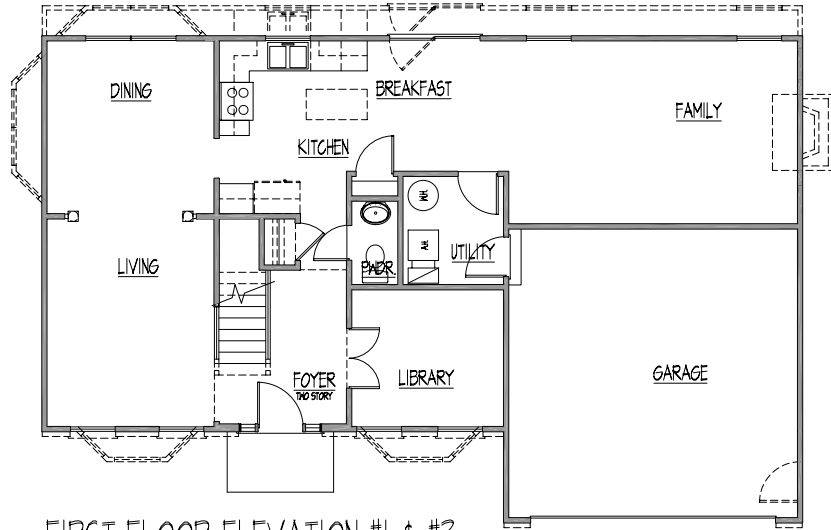
| NO. | DESCRIPTION | DATE |
|-----|-------------|------|
| | | |
| | | |
| | | |
| | | |
| | | |
| | | |
| | | |
| | | |

PAGE NO.

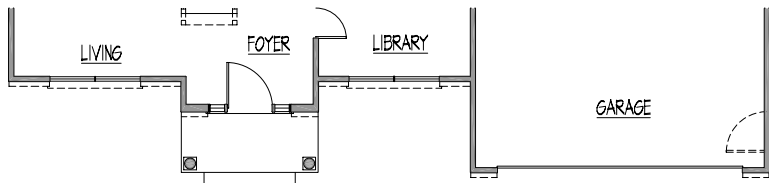
A-20



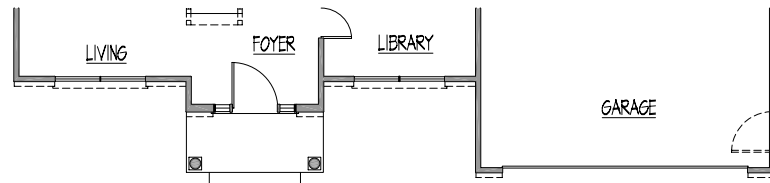
FIRST FLOOR ELEVATION #1 & #3



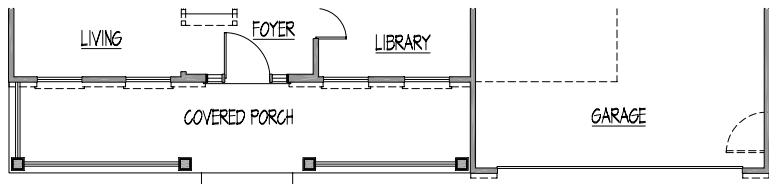
FIRST FLOOR ELEVATION #1 & #3



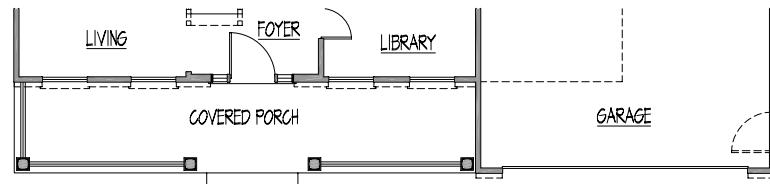
FIRST FLOOR ELEVATION #2



FIRST FLOOR ELEVATION #2



FIRST FLOOR ELEVATION #4



FIRST FLOOR ELEVATION #4

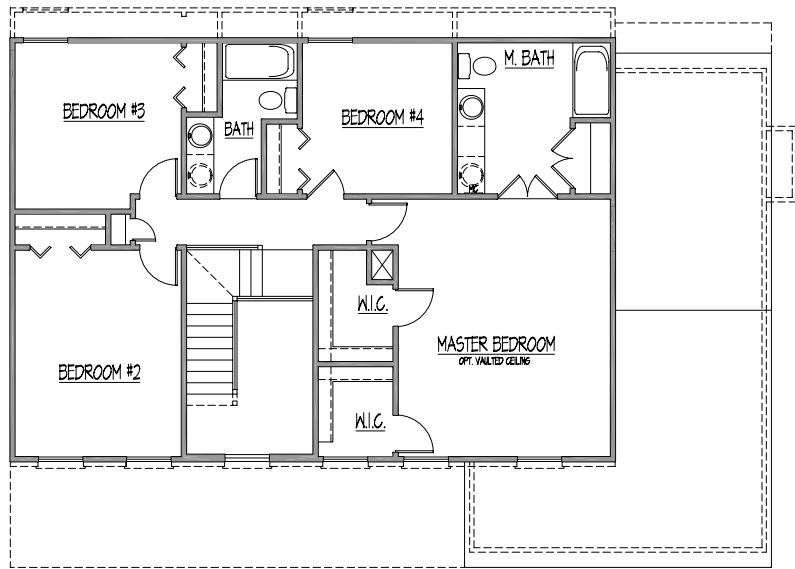
JONATHAN P. BUTTS
 ARCHITECTURAL DESIGNER
 446 CONCORD COURT
 BALTIMORE, MARYLAND 21284
 410.946.4801

FIRST FLOOR PLANS
 DATE: JUNE 12, 2009
 SCALE: 1/8" = 1'-0"
 PROJECT TITLE: THE CAMBRIDGE I & II

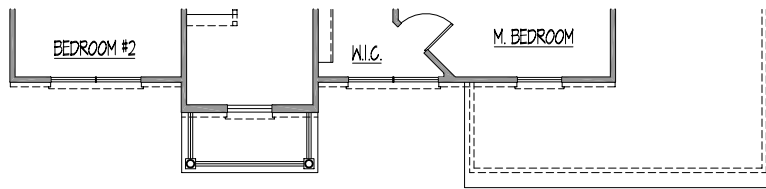
CONTRACT NO. 090101
 SHEET NO. 16

| | | |
|-------|------|-------------|
| ISSUE | DATE | DESCRIPTION |
| | | |
| | | |
| | | |
| | | |
| | | |
| | | |
| | | |
| | | |
| | | |

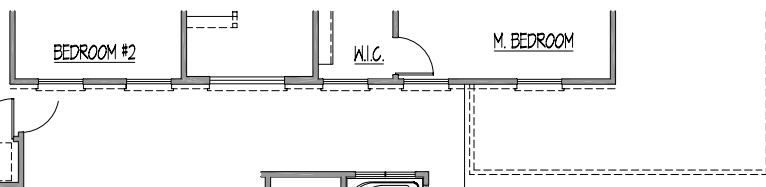
A-3



SECOND FLOOR CAMBRIDGE I ELEVATION #1 AND #4

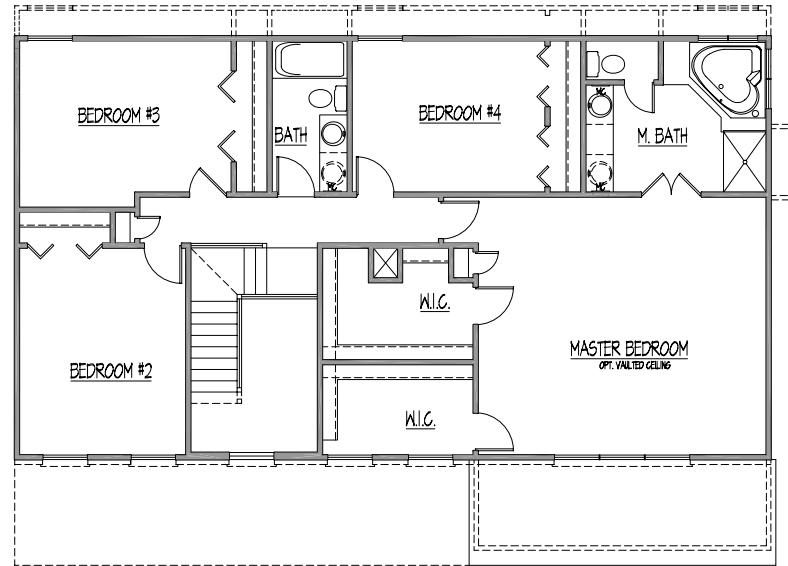
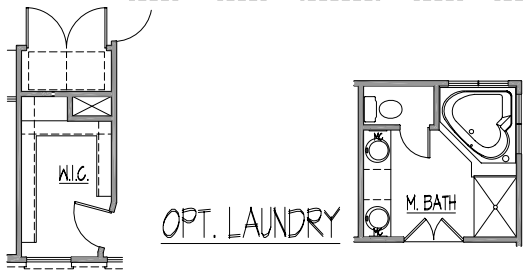


SECOND FLOOR CAMBRIDGE I ELEVATION #2

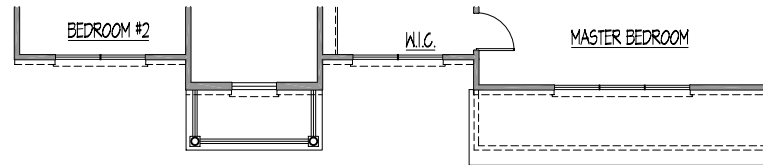


SECOND FLOOR CAMBRIDGE I ELEVATION #3

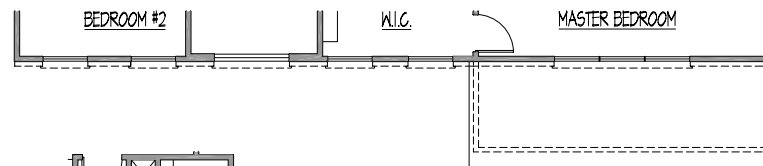
OPT. CAMBRIDGE I SUPER BATH



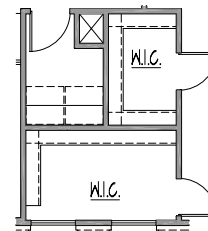
SECOND FLOOR CAMBRIDGE II ELEVATION #1 AND #4



SECOND FLOOR CAMBRIDGE II ELEVATION #2



SECOND FLOOR CAMBRIDGE II ELEVATION #3



CAMBRIDGE II OPT. LAUNDRY